

**MULTI-TOUCH
ATTRIBUTION IS
DEAD**



AN OPTIMINE EBOOK



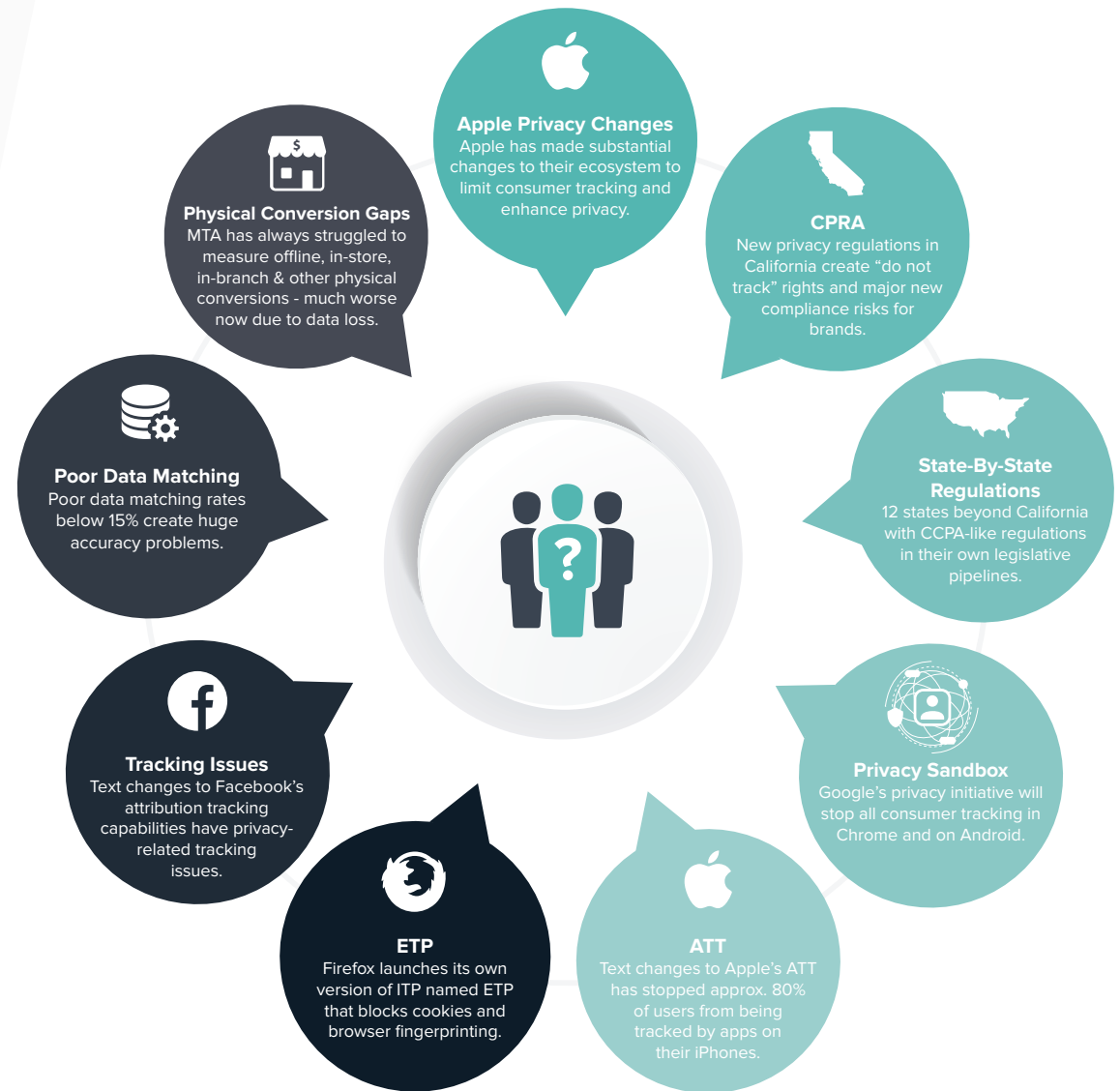
Multi-Touch Attribution is Dead

Multi-Touch Attribution is dead. For those of you who haven't even deployed your first multi-touch attribution model, skip past "Go" and consider yourself lucky. Multi-Touch Attribution- or "MTA" for short- is a method of attempting to measure the effectiveness of marketing campaigns by tracking users across devices and ads using their identities and clicks to determine which ads "caused" the customer to make a purchase. MTA was never a very accurate or reliable method of marketing measurement, and it is now under significant privacy pressure and is no longer a viable method for true cross-channel measurement.

A Period of Massive Disruption and Change

The marketing ecosystem is now in a period of massive disruption and change, with several factors stopping MTA measures dead in their tracks. Major consumer data privacy changes from technology titans and an explosion of new state-by-state privacy regulations have all created roadblocks to MTA. As a result, brands must now look for new ways of measurement to stay competitive and protect their marketing investments.

An Era of Massive Disruption and Change



Revenge of the Nerds: Apple ATT

Apple continues its march for consumer data privacy, and App Tracking Transparency- “ATT” changes in iOS have essentially killed user-based attribution. Brands and app developers are no longer be able to uniquely attribute an ad’s contribution to outcomes, thereby removing measurement of nearly 50%+ of the mobile phone ecosystem. Plus, Apple continues to create and enforce new privacy changes indicating it isn’t done with the rollout and enforcement of new privacy controls.

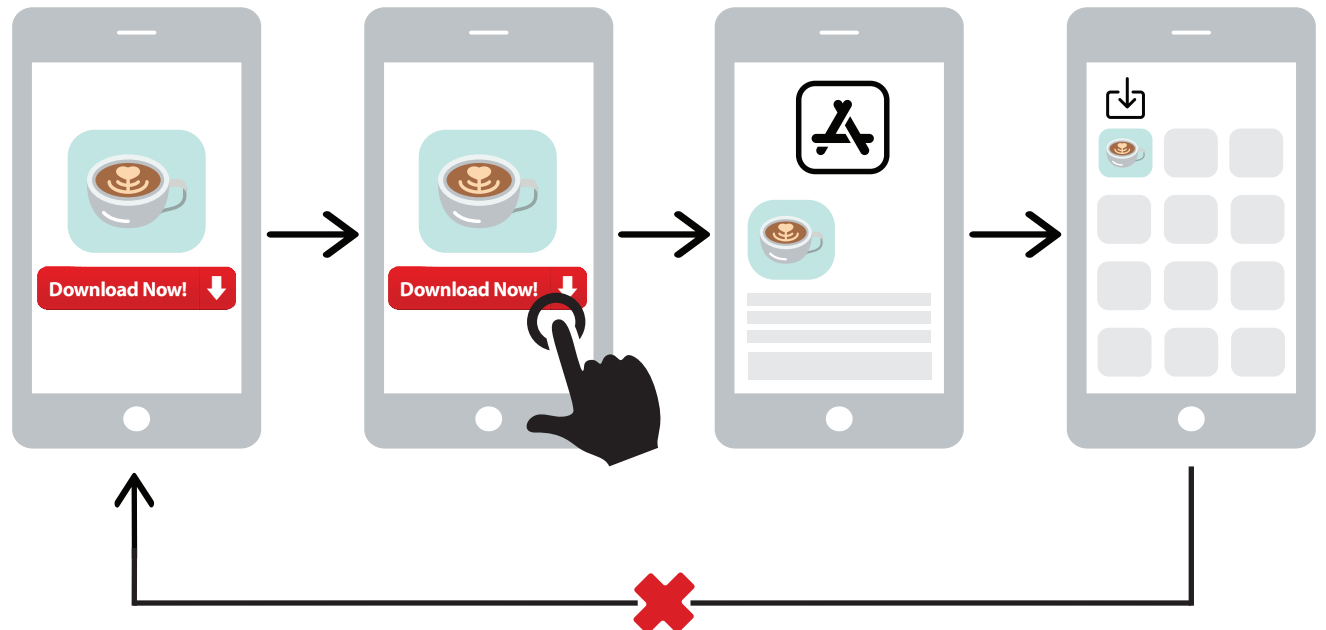
This creates massive issues for marketers relying on these methods to track, measure and optimize their advertising campaigns and investment decisions. What ad, creative, targeting and formats work and don’t work? These answers disappeared overnight in early 2021. Marketers are now on the clock to find a new solution. Hint: OptiMine is completely unaffected by Apple’s privacy changes.

Only 10-20% of users have chosen to allow tracking so far.

“Pal About” would like permission to track you across apps and websites owned by other companies.
Your data will be used to deliver personalized ads to you.

Allow Tracking

Ask App Not to Track



Revenge of the Nerds 2.0: Google Privacy Sandbox

Apple started the march towards consumer data privacy all the way back in 2014 and hasn't stopped since. Next up is Google with its own Privacy Sandbox. Much of the focus on Google's privacy efforts have been focused on the fact that the 3rd party cookie is being killed off in Chrome in 2024. But that's only part of the story. More important for marketers considering multi-touch attribution is the fact the Google's Privacy Sandbox will also stop ALL consumer identity tracking in Chrome and Android, which both account for approximately 50% of the browser and mobile phone markets. Combined with Apple's privacy changes, Google's Privacy Sandbox will cause nearly the entire consumer tracking ecosystem to go dark in 2024.

Tech Industry Privacy Changes are Making the Entire Ecosystem Go Dark



Inherent Weaknesses of MTA

MTA promised to measure the mightly and mythical “path to purchase” and the magical sequence of advertisements that unlocked the treasure chest of consumer purchases. Never mind the inconvenient fact that over half of online purchases have two or fewer clicks prior.¹ And, if the cookies and 3rd party data get the consumer matching wrong even by a small percentage, the models and measures become highly inaccurate in a hurry.

Think this doesn't happen? It most certainly does. Read “Measuring the Incremental Values of Marketing,” [here](#).



Most of these issues are well known to cross-channel marketers and analytics professionals. Despite this, many have pursued the tantalizing siren song of consumer tracking-based measurement. Tracking via MTA can be a good method for understanding the consumer experience and for personalization objectives, but it just isn't particularly good for measuring the contributions of an ad. Even the MTA vendors knew about these problems and added other techniques (marketing mix modeling) to overcome these known deficiencies and accuracy issues. The problem is, they still use MTA to measure digital campaigns, and all of the MTA problems still exist.



Here Come the Regulations

To make matters for MTA worse, there are new regulations hitting marketers and marketing technology vendors right in their MTA hearts. The roll-out of GDPR in the European Union sent marketers and vendors scrambling as a result of new restrictions on consumer tracking and consumer data.

California was the first state in the US to roll out consumer privacy restrictions - the California Consumer Privacy Act ("CCPA" for short). They have not been and will not be the last state to do this - as Virginia, Utah, Connecticut and Colorado followed in their footsteps shortly after. Most recently, Indiana, Iowa, Montana, Oregon, Tennessee & Texas have enacted comprehensive privacy laws that will go into effect over the next few years.

States That Have Passed Privacy Regulations

California
CCPA - 2020



Virginia
Virginia Consumer Data Privacy Act - 2023



Connecticut
Personal Data Privacy & Online Monitoring Act - 2023



Colorado
Colorado Privacy Act - 2023



Utah
Utah Consumer Privacy Act - 2023



Oregon
Oregon Consumer Privacy Act - 2024



Texas
Texas Data Privacy and Security Act - 2024



Montana
Montana Consumer Data Privacy Act - 2024



Iowa
Iowa Consumer Data Protection Act - 2025



Tennessee
Tennessee Information Protection Act - 2025



Indiana
Indiana Consumer Data Protection Act - 2026



OptiMine is the Agile Measurement Choice

Agile measurement and attribution is the key to transitioning to success during this period of consumer privacy & data disruption. Only OptiMine offers brands a truly agile marketing measurement choice:

Agile Requirement



OptiMine Advantage

Future-Proof



Only OptiMine provides attribution without PII, cookies, or consumer data, making it the only future-proof measurement solution on the market.

Privacy regulations and cookie death? No Problem. OptiMine (and you) will NOT be impacted by those or any other changes.

Flexibility



New question? No Problem. Only OptiMine has the data management flexibility to quickly adapt and address new questions at the speed of business.

Think MTA is fast? Think again. Do you have time to completely re-tag all of your brand's digital assets to ask a new question? No way.

Speed



Only OptiMine delivers modern high-scale software easily beating highly manual approaches of all other marketing measurement vendors.

OptiMine is the fastest marketing attribution vendor in the market- fastest to deploy, fastest to evolve and adapt, fastest to refresh models to deliver insights as the market rapidly evolves.



Contact Us

Contact us today to schedule a demo or meet with OptiMine to learn how you can leverage our advanced analytics to lift your marketing performance.



1400 Van Buren St. NE, Suite 200
Minneapolis, MN 55413



info@optimine.com
www.optimine.com